

maxit imazine



© 14.09.2007

ontwerp © Jan Doms

visualisatie: Philip van Boxel

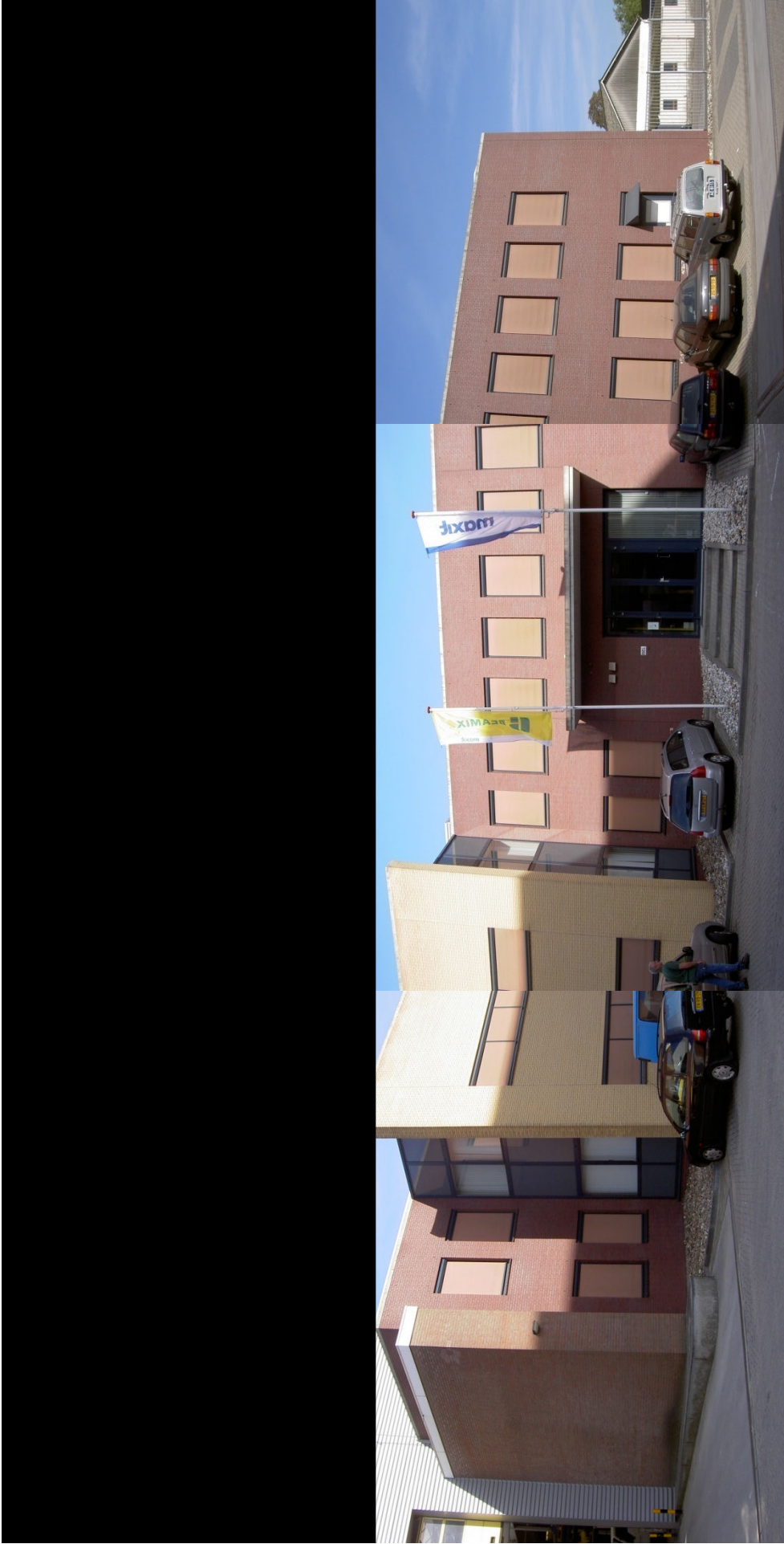
transformatie kantoorgebouw

opgave 1

- functies:
ontvangst, kennisoverdracht en animatie
- elementen:
front, ingang en verdieping
- doelgroepen:
opdrachtgevers, architecten en ingenieurs
- Randvoorwaarden
wettelijke eisen, kwaliteitsslag en doeltreffend

opgave 2

- functies:
ontvangst, kennisoverdracht en animatie
- elementen:
front, ingang en verdieping
- doelgroepen:
opdrachtgevers, architecten en ingenieurs
- Randvoorwaarden
wettelijke eisen, kwaliteitsslag en doeltreffend





© 14.09.2007

front neon-belettering

transformatie verdieping

opgave 1

- functies:
ontvangst, kennisoverdracht en animatie

- elementen:
vergaderzaal, foyer/bar en bioscoop, garderobe, toiletten

- doelgroepen:
opdrachtgevers, architecten en ingenieurs

- randvoorwaarden
wettelijke eisen, kwaliteitsslag en doeltreffend

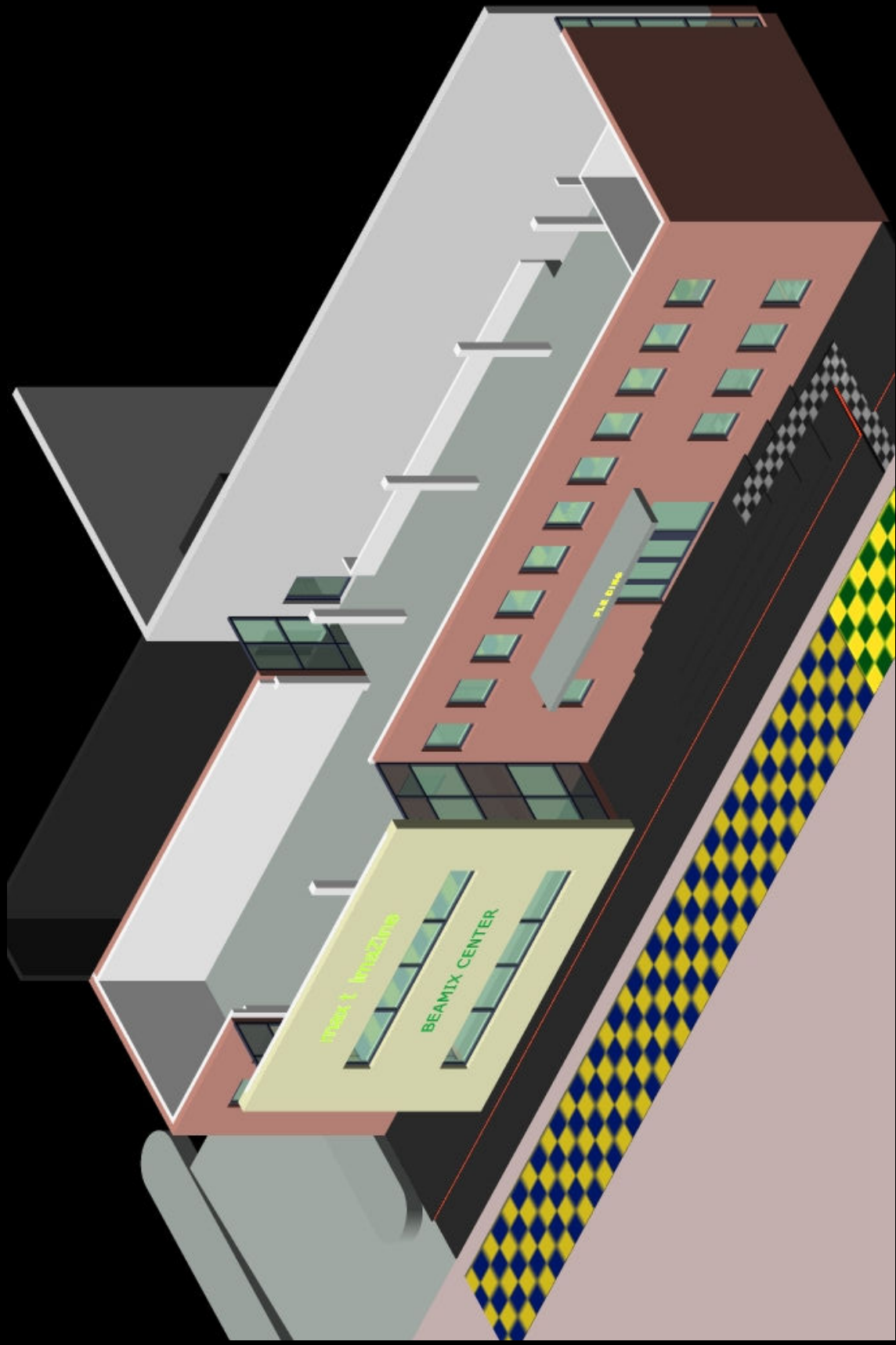
opgave 2

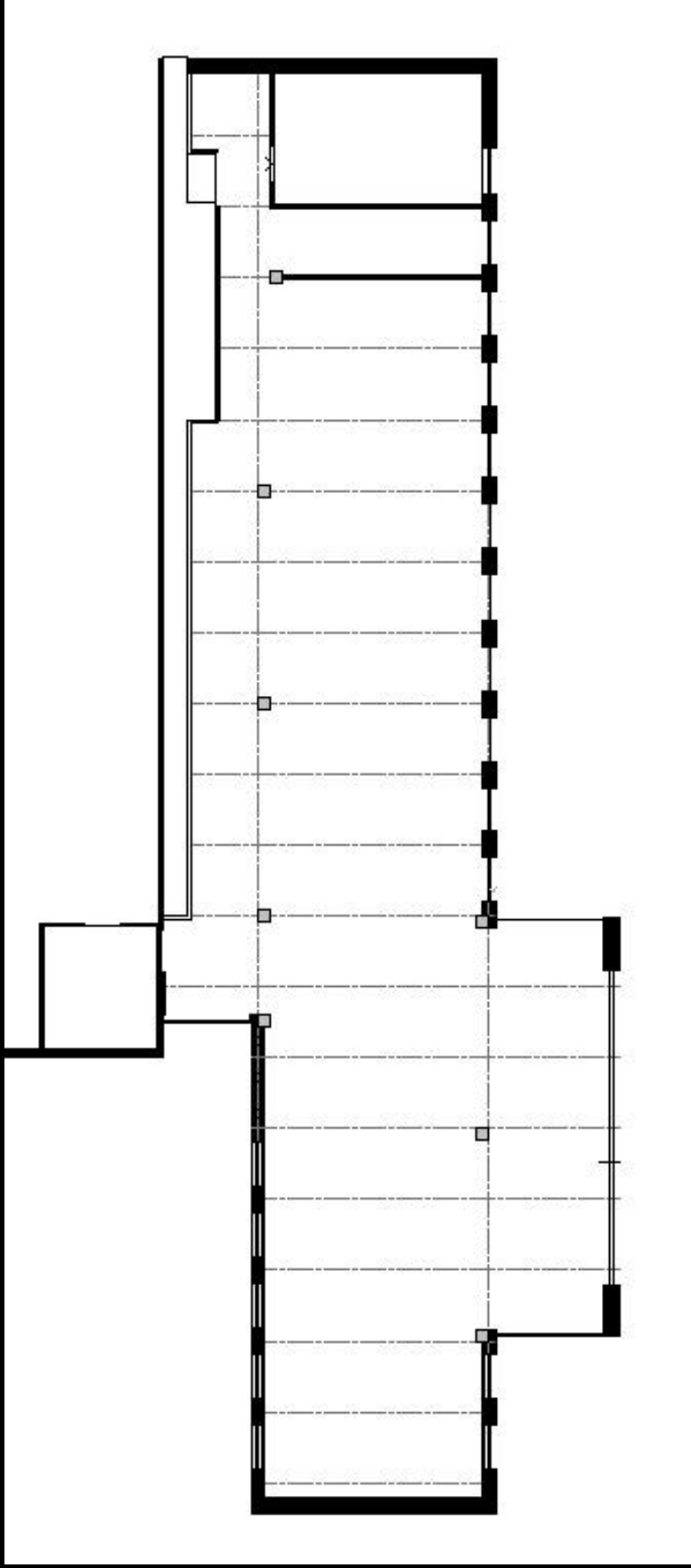
- functies:
ontvangst, kennisoverdracht en animatie

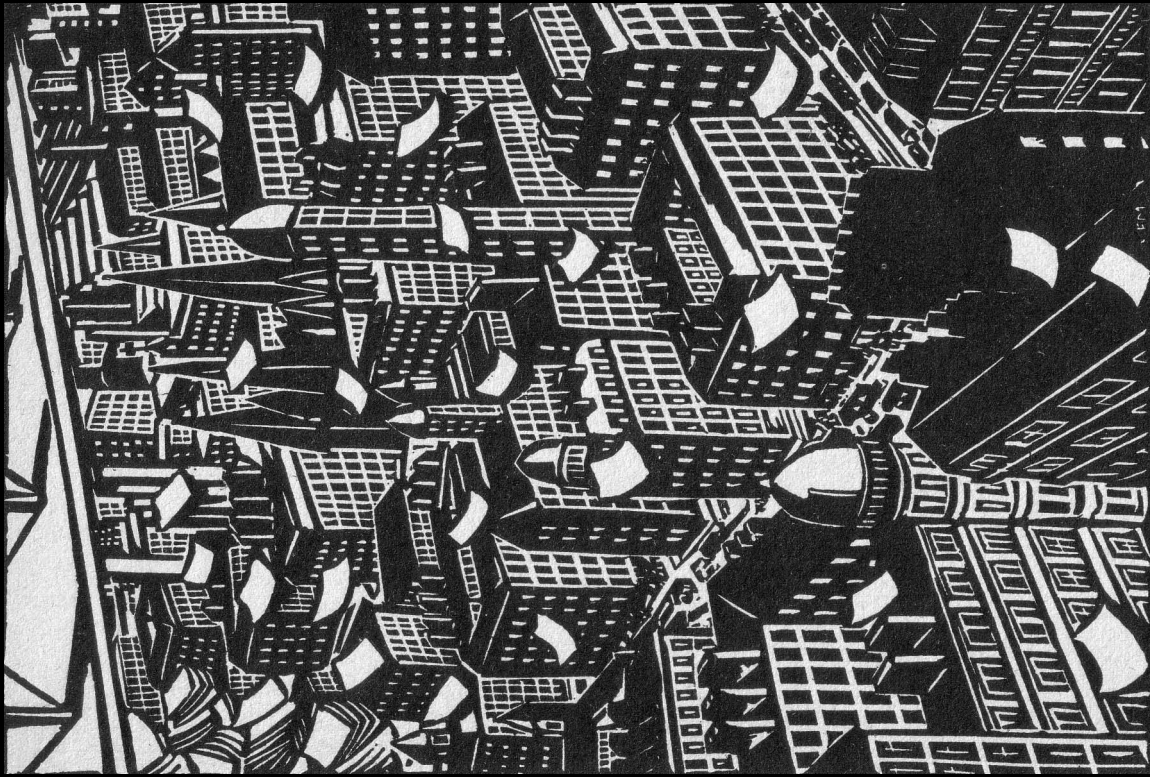
- elementen:
foyer/bar, bioscoop, garderobe, urinoir

- doelgroepen:
opdrachtgevers, architecten en ingenieurs

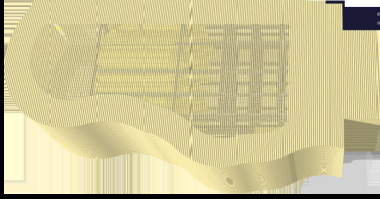
- randvoorwaarden
wettelijke eisen, kwaliteitsslag en doeltreffend

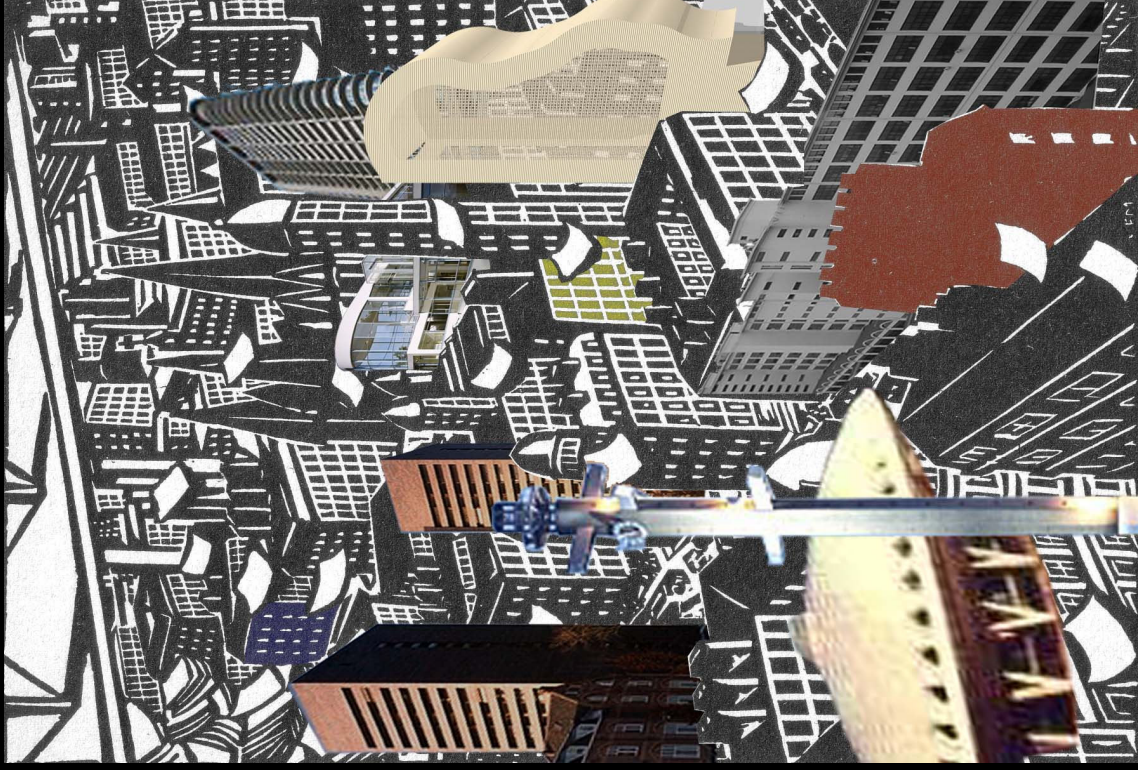


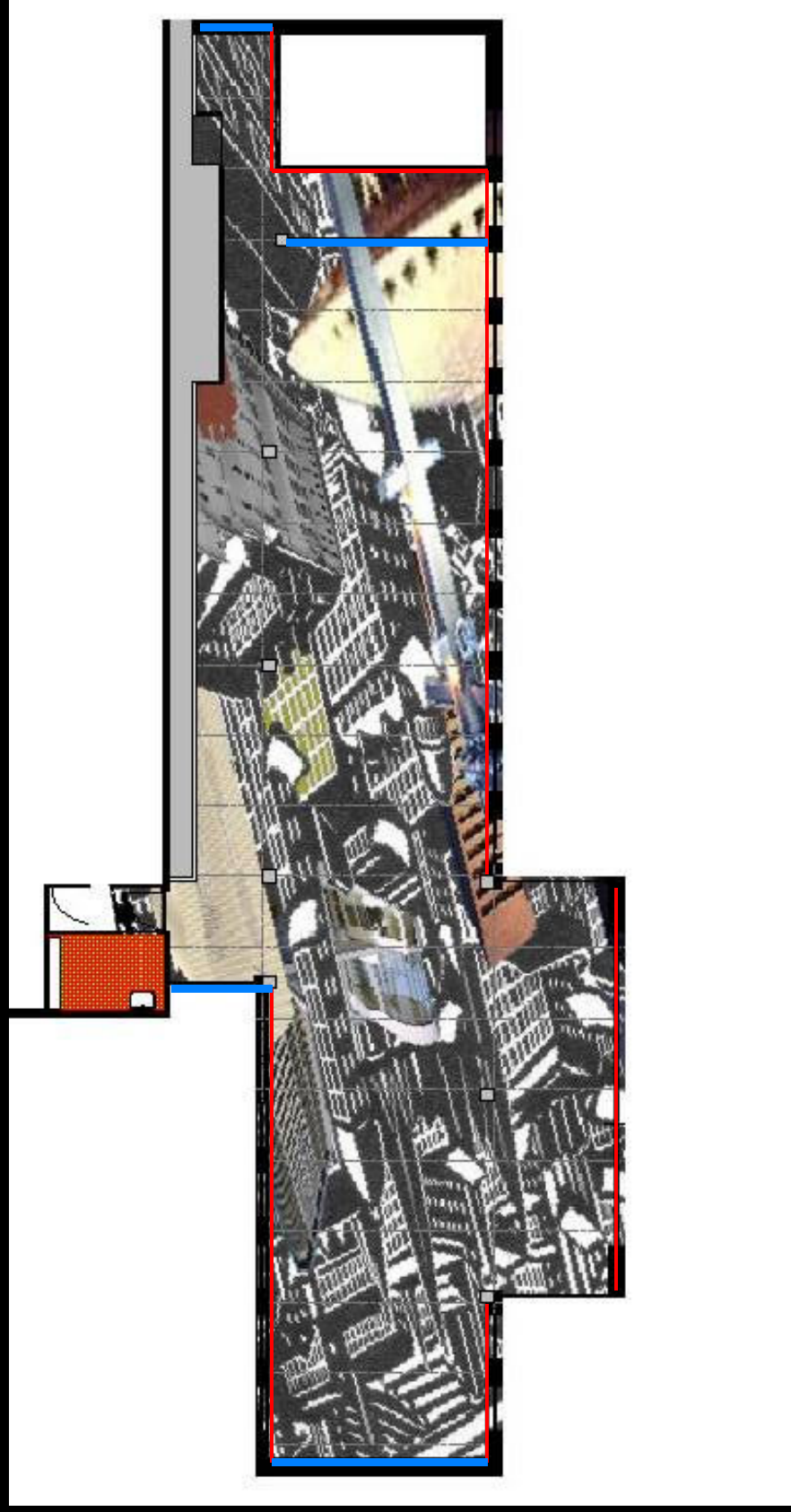




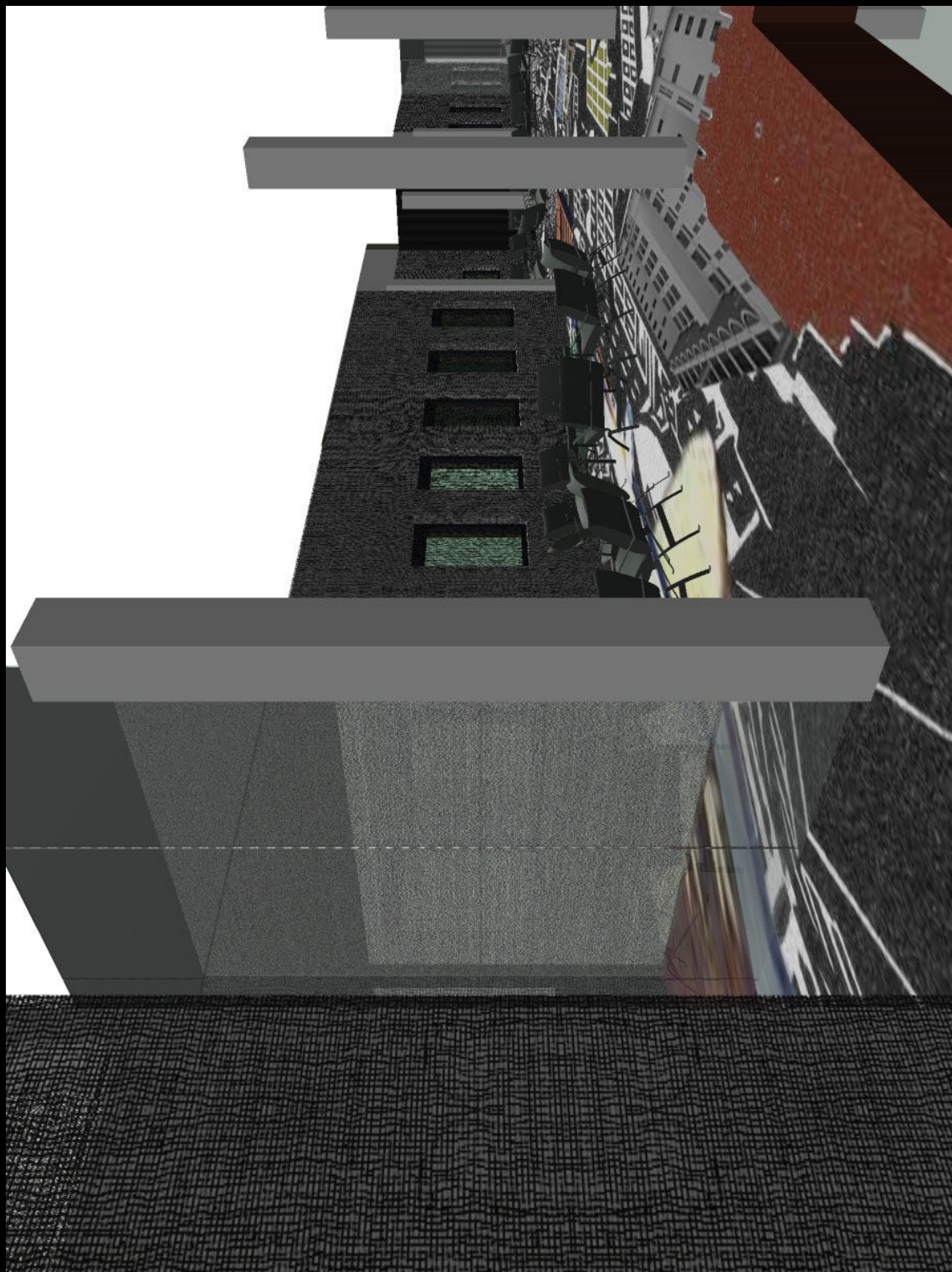


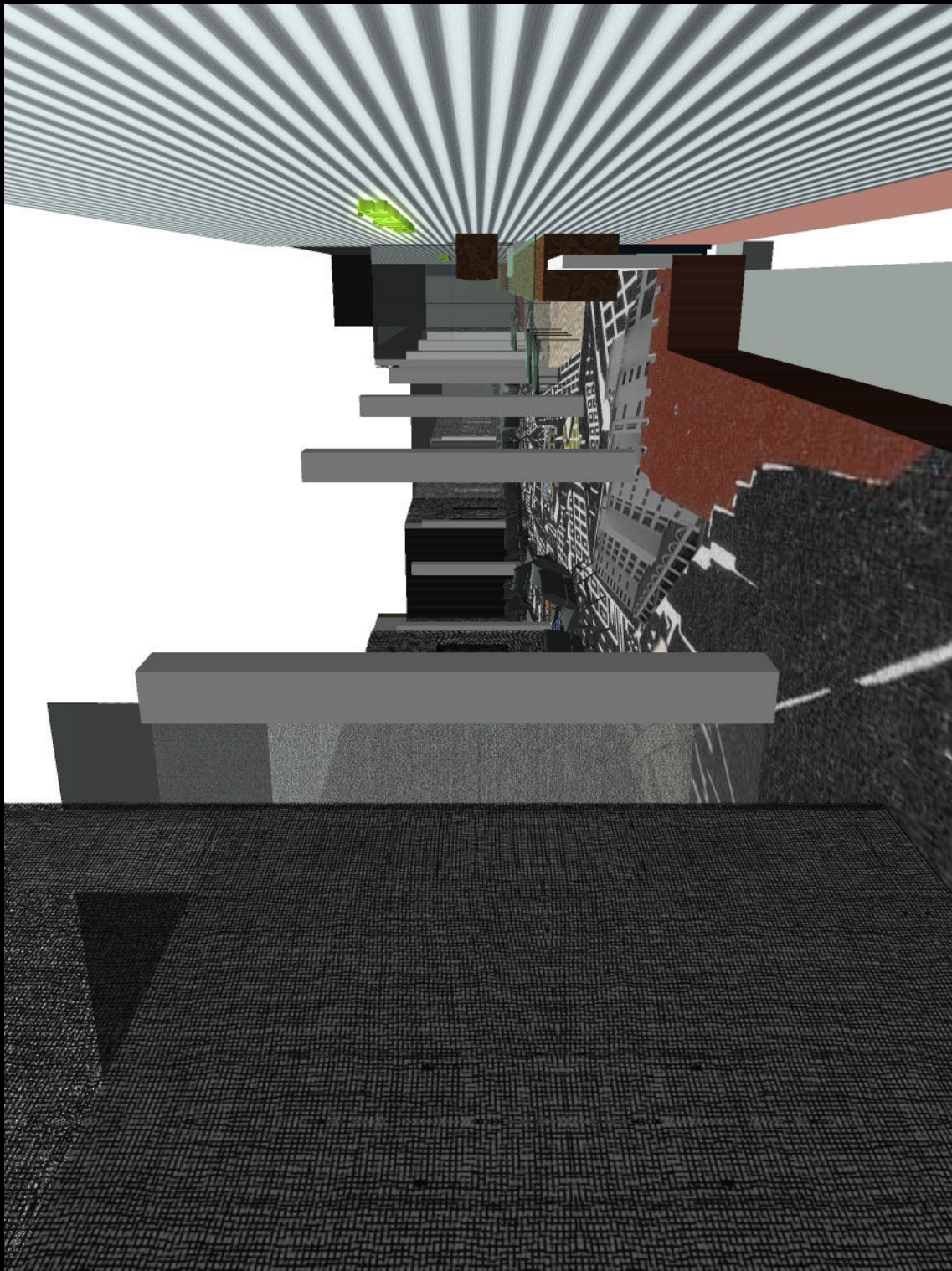




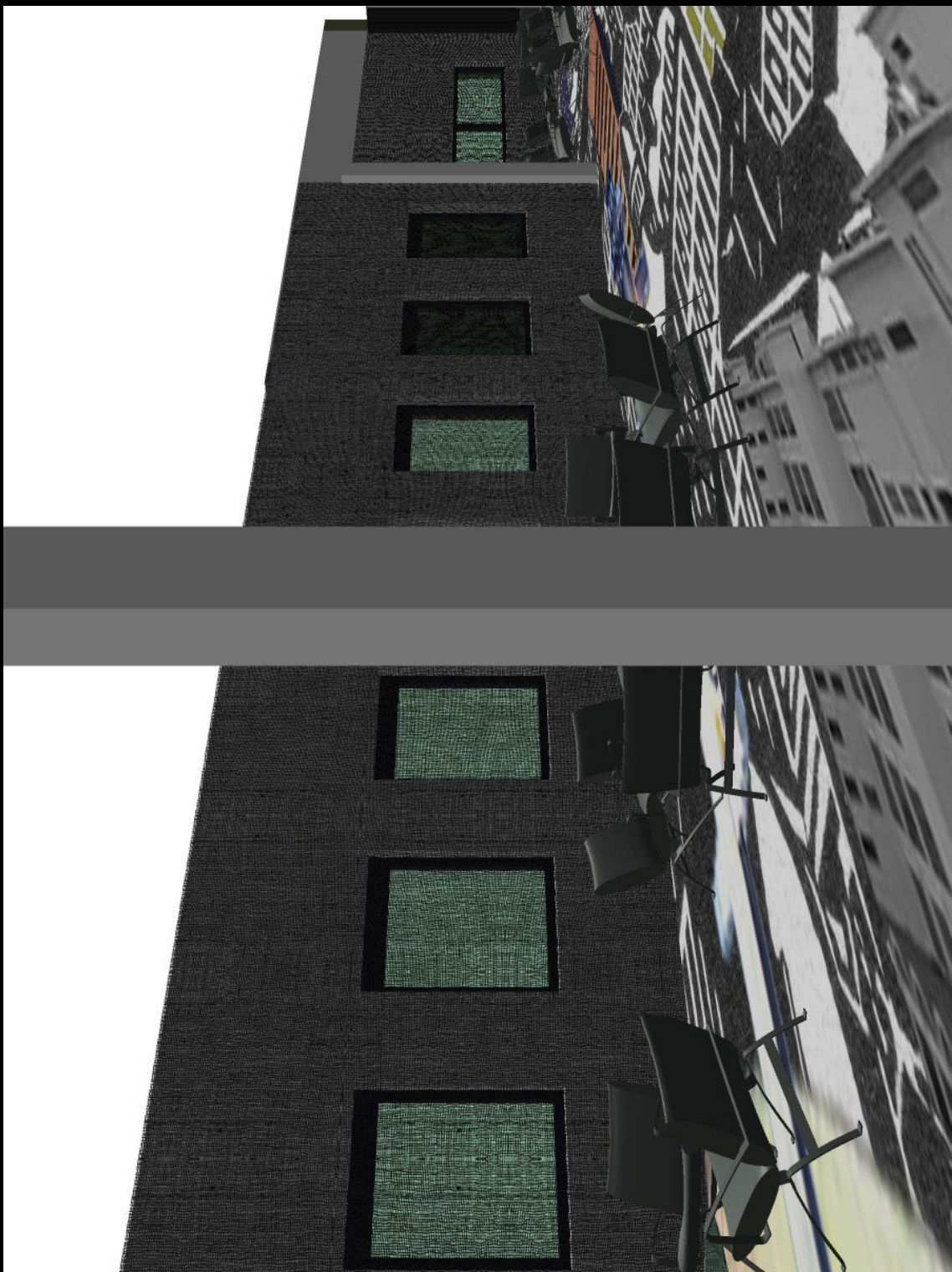


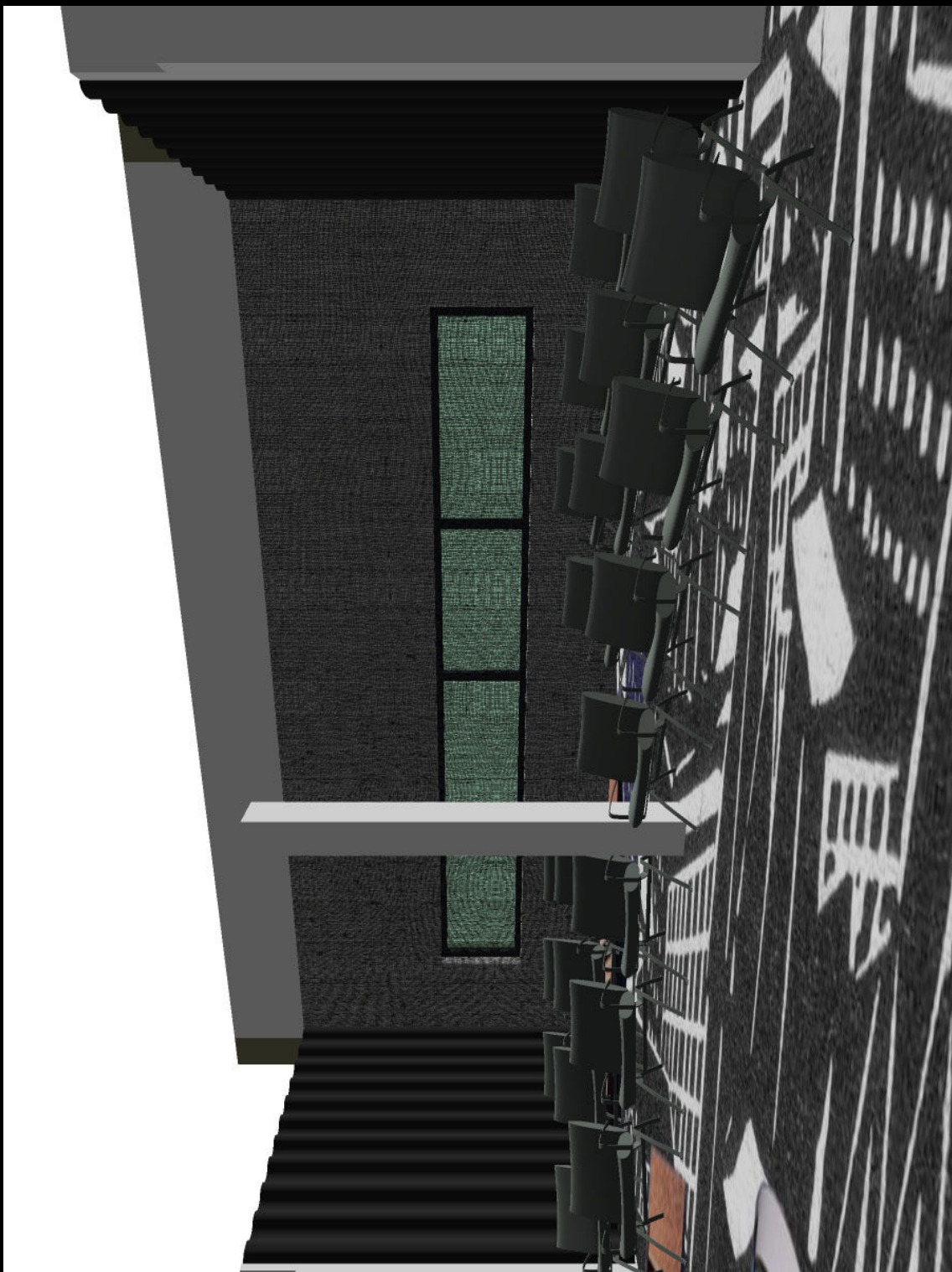


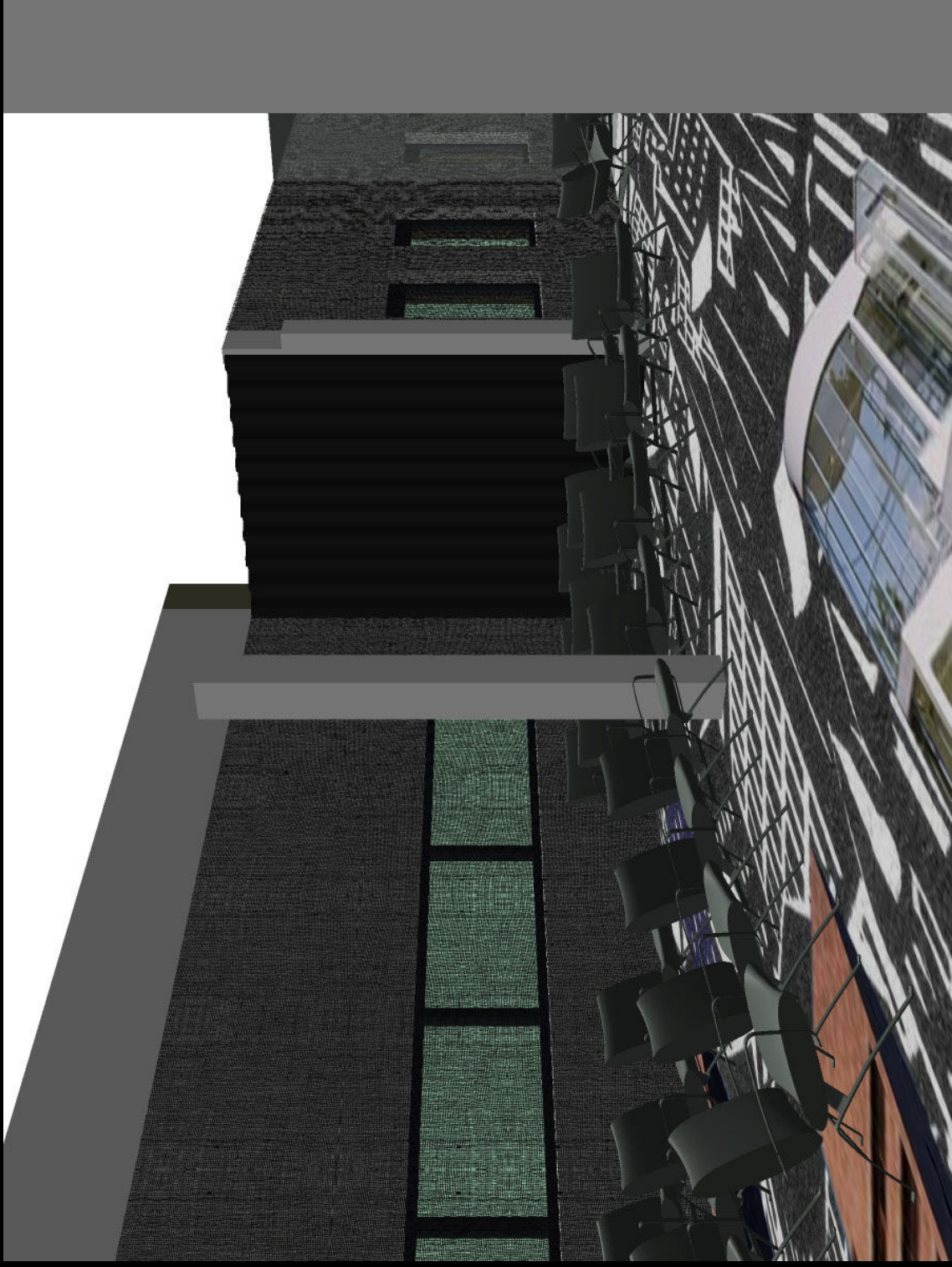


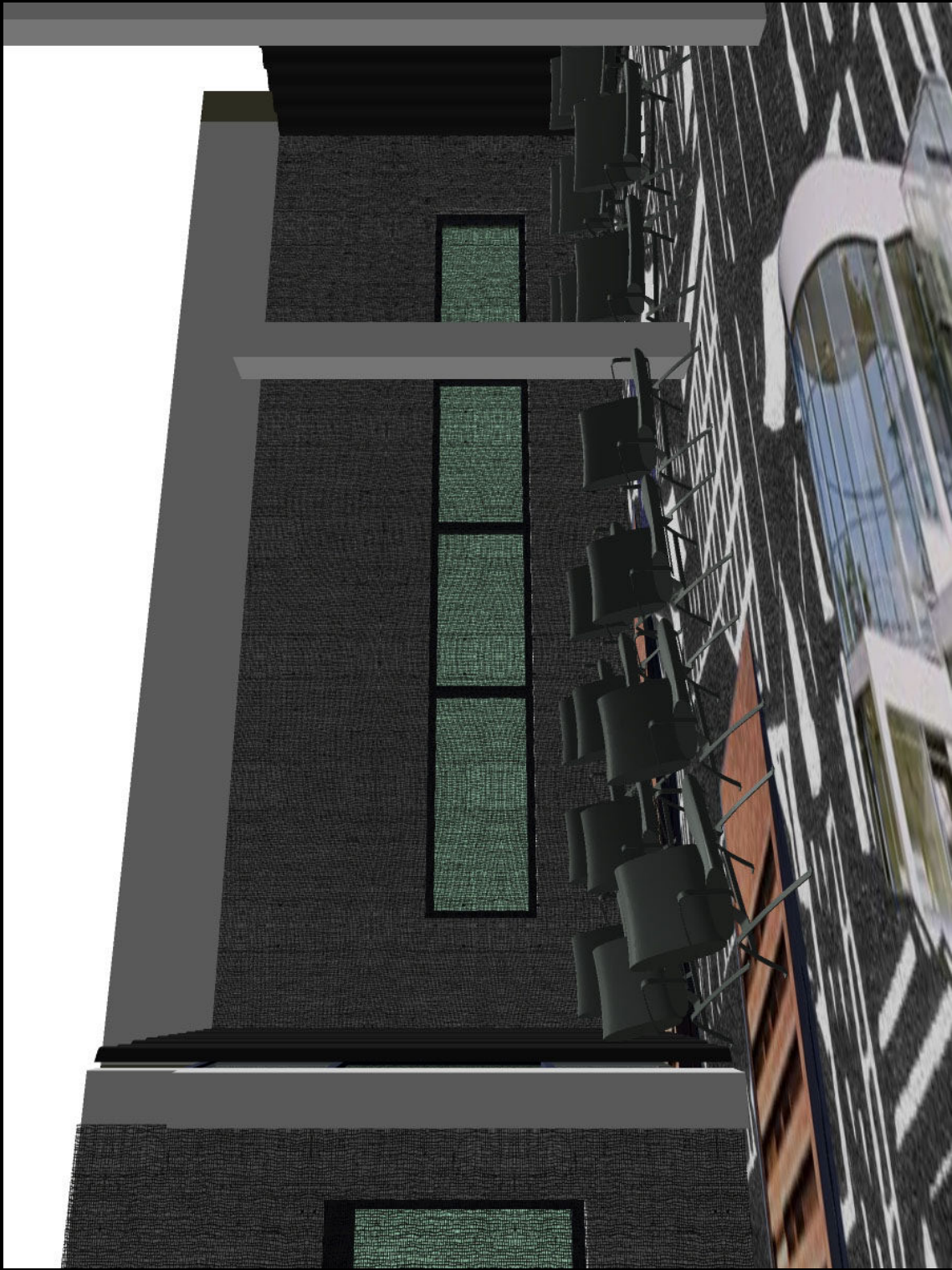


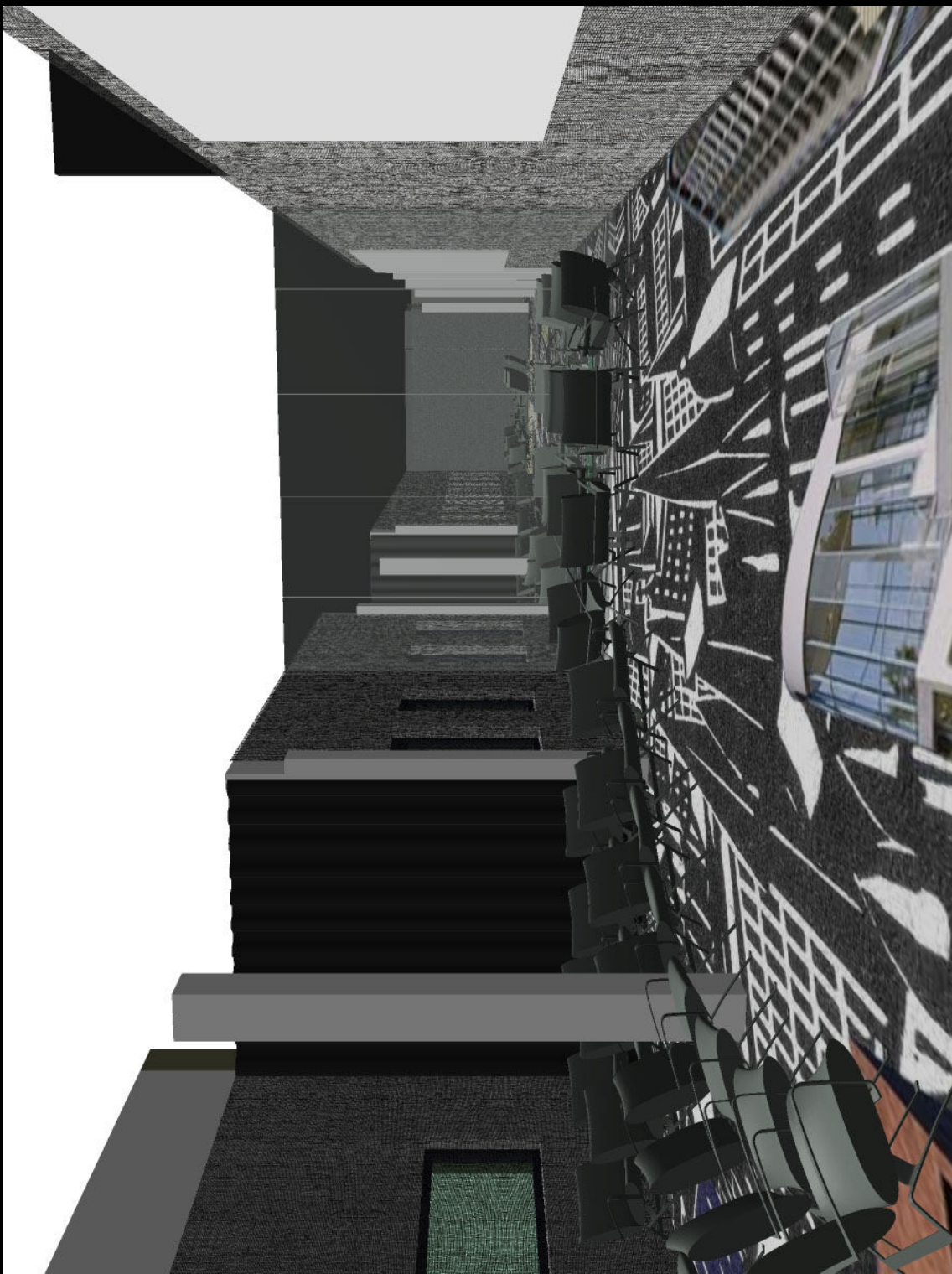


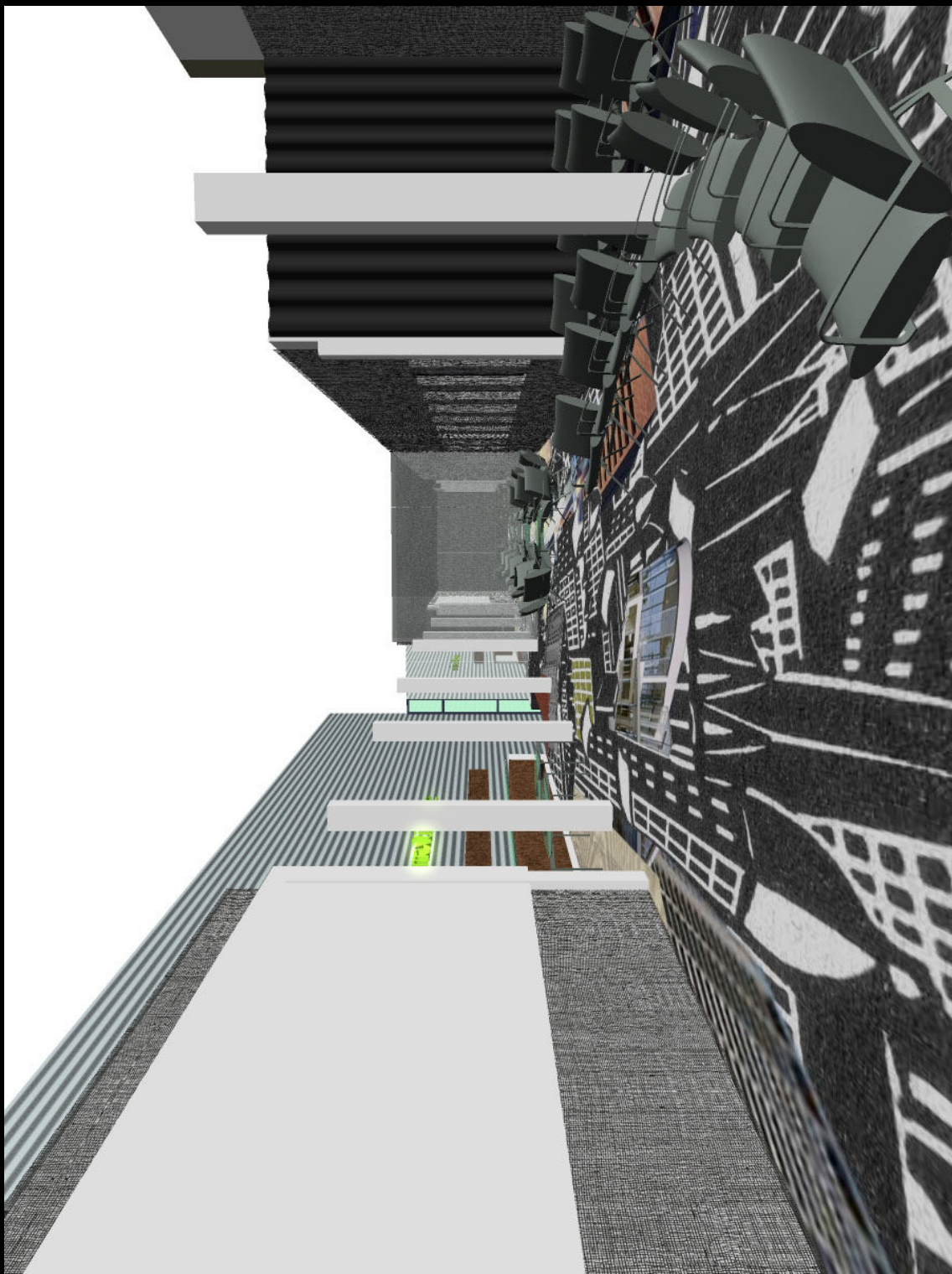


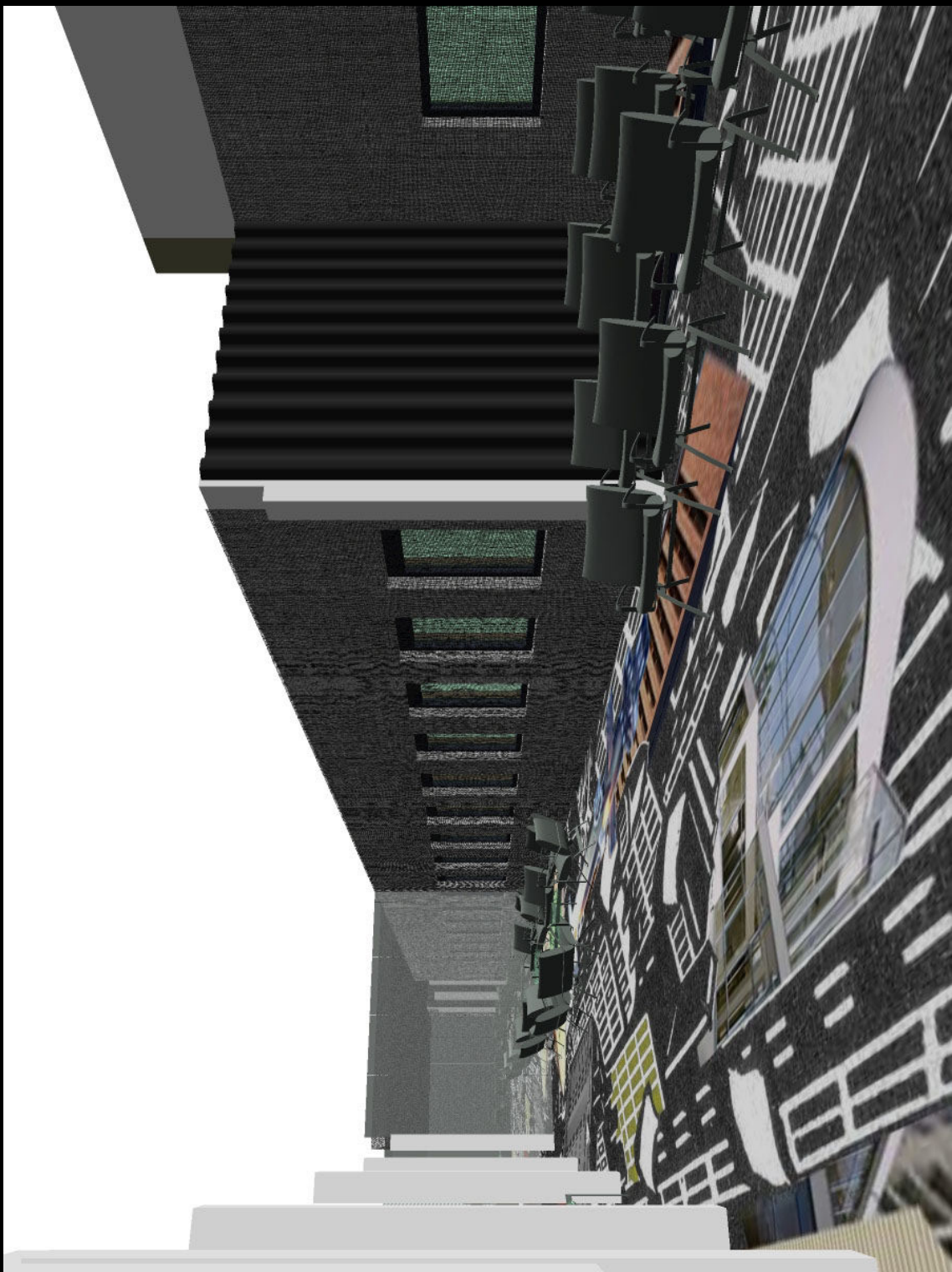


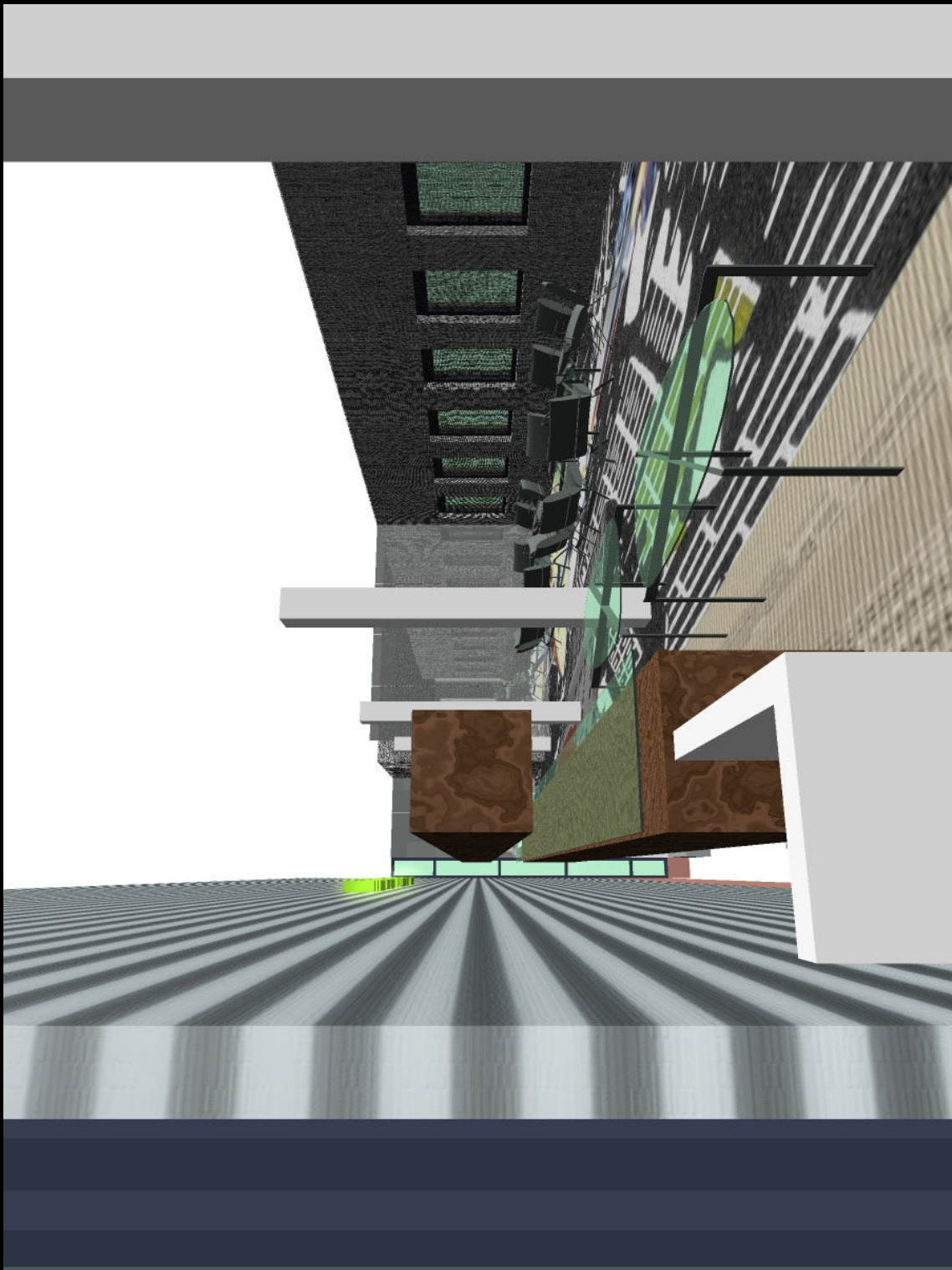


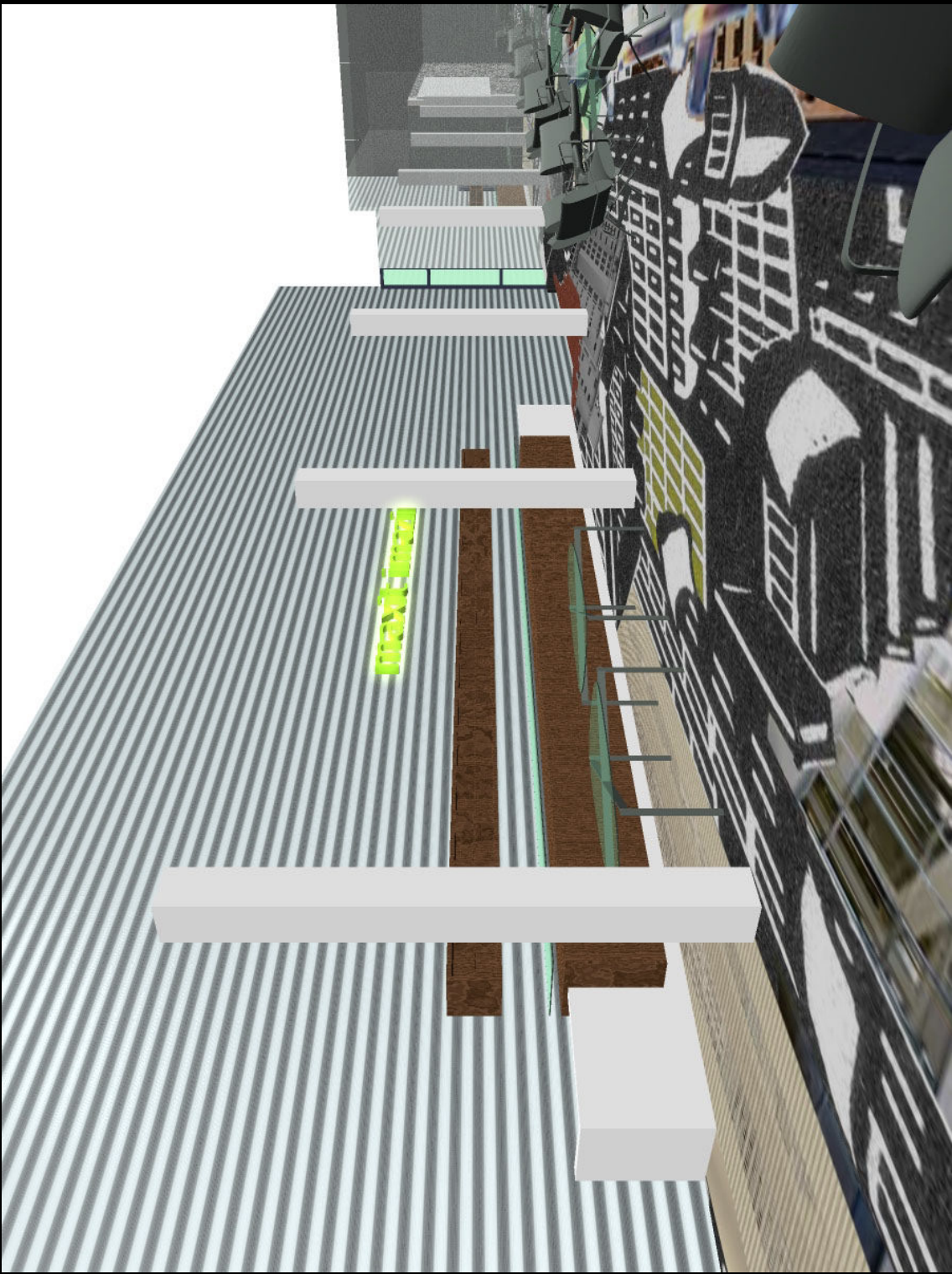


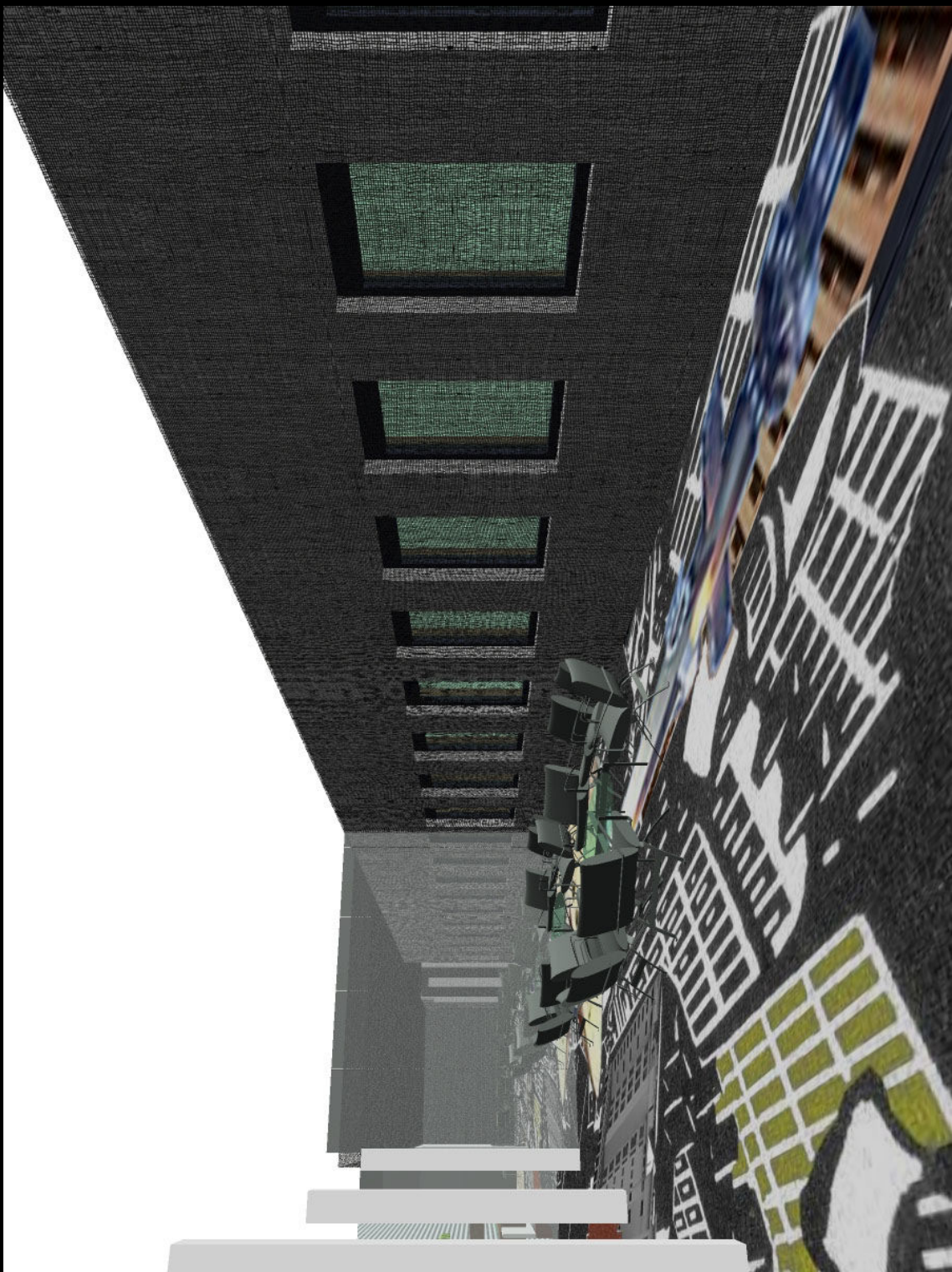


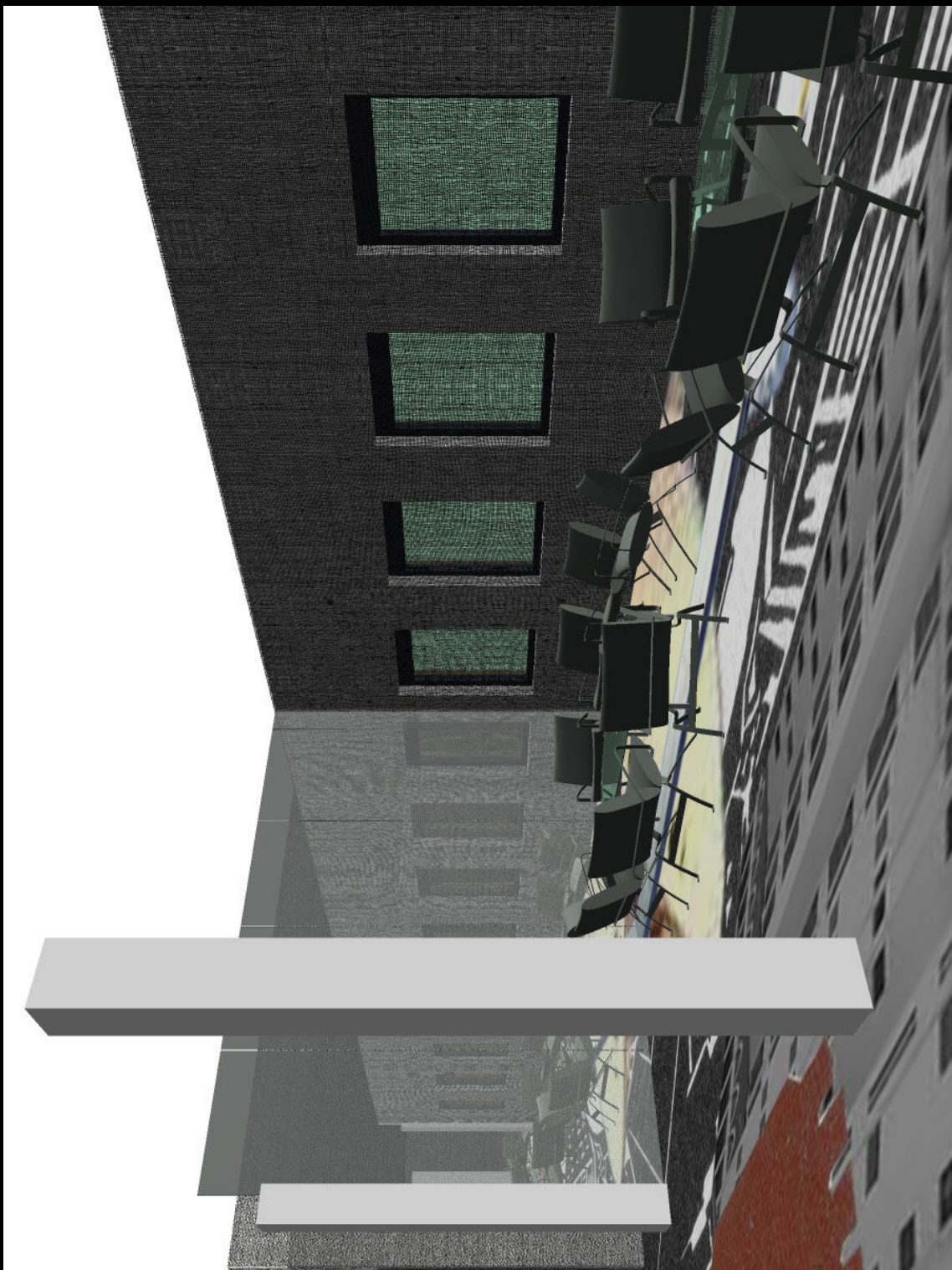












fin



© 14.09.2007

fin